



Dealer Pricing & Program



Zero Clearance Wood Burning Fireplace

Introduce a universe of comfort and warmth with the award-winning Galaxy. This large zero clearance fireplace proposes a versatile design that is offered in three different surround options to suit all decors: Classic, Modern and Contemporary. Among its many features, the Galaxy comes completely assembled with a heat-activated blower, a sealed ash pan, a built-in barbecue grill and a patented automatic air control.

TECHNICAL SPECIFICATIONS

Heat Capacity:	2,500 square feet
Max. Heat Output:	100,000 BTUs/hour (based on a 33 lb load of wood)
EPA Firebox Size:	3.1 cubic feet
Chimney:	6 inch listed to UL 103/ ULC S629 standards
Certifications:	EPA 28 & 5G option 3, CSA B-415.1.10, UL 127-2011 and ULC S610-M87
Emissions:	3.5 g/hr with EPA method 28 & 5G 2.2 g/hr with CSA method B-415.1.10
Glass Dimensions:	22 ¾" x 15"
Patent Numbers:	9/605,851, 7/325,547 & 9/476,593

PRODUCT CODE	DESCRIPTION	SUGGESTED RETAIL
GY-01	Galaxy, firebox and door in metallic black	\$ 3 400.00
GY-02	Galaxy, firebox and door in charcoal	\$ 3 400.00
UCAC8	Gravity duct: 8 inch insulated, 10 feet long (two are required for the installation of the Contemporary face assembly)	\$ 126.00

OPTIONS *(select one of the following face assemblies to complete order)*

GYFA-111	Galaxy Classic face assembly in metallic black	\$ 195.00
GYFA-112	Galaxy Modern face assembly in metallic black	\$ 195.00
GYFA-113	Galaxy Contemporary face assembly in metallic black	\$ 195.00
GYFA-211	Galaxy Classic face assembly in metallic charcoal	\$ 195.00
GYFA-212	Galaxy Modern face assembly in metallic charcoal	\$ 195.00
GYFA-213	Galaxy Contemporary face assembly in charcoal	\$ 195.00

ADDITIONAL OPTIONS

SU250	Hot air system 245 CFM	\$ 397.39
UCAC5	5 inch insulated duct, 25 feet long (for hot air system)	\$ 119.48
UPEA4	Fresh air kit	\$ 62.51
ADP4	Adaptor for fresh air kit	\$ 55.00
6CON	Connector from prefabricated chimney to liner	\$ 70.74



MODERN



CLASSIC



CONTEMPORARY



ASTRA 24

Zero Clearance Wood Burning Fireplace

Thanks to its compact depth, the Astra 24 can seamlessly be installed into an existing wall to replace an old decorative unit while providing all the visual appeal of a large fireplace. The ingenious design of the firebox features cast-iron panels for extreme durability and prolonged burn times. Patented ignition and air control systems allow spaces of up to 1,500 square feet to be warmed with ease. The Astra’s high efficiency is also matched by its environmental credentials with an EPA certification of 1.8 g/hr.

TECHNICAL SPECIFICATIONS

Heat Capacity:	1,500 square feet
Max. Heat Output:	75,000 BTUs/hour (based on a 33 lb load of wood)
EPA Firebox Size:	2.4 cubic feet
Chimney:	6 inch listed to UL 103/ ULC S629 standards
Certifications:	EPA 28 & 5G option 3, CSA B-415.1.10, UL 127-2011 and ULC S610-M87
Emissions:	1.8 g/hr
Glass Dimensions:	24" x 13½"
Patent Numbers:	7/325,547 & 9/476,593

PRODUCT CODE	DESCRIPTION	SUGGESTED RETAIL
--------------	-------------	------------------

24AT-01	Astra 24, firebox and door in Metallic Black	\$ 3 100.00
UCAC8	Gravity duct: 8 inch insulated, 10 feet long (two are required for the installation of the Clean Face.)	\$ 126.00

OPTIONS *(select one of the following face assemblies to complete order)*

24ATFA-11	Astra 24 Traditional surround in metallic black	\$ 250.00
24ATFA-12	Astra 24 Clean Face surround in metallic black	\$ 250.00

ADDITIONAL OPTIONS

SU250	Hot air system 245 CFM	\$ 397.39
UCAC5	5 Inch insulated duct, 25 feet long (for hot air system)	\$ 119.48
UPEA4	Fresh air kit	\$ 62.51
ADP4	Adaptor fresh air kit	\$ 55.00
6CON	Connector from prefabricated chimney to liner	\$ 70.74



ASTRA 24CF



ASTRA 24TD

DUET

See-Through Wood Burning Fireplace

The Duet doubles as a visually compelling feature in any interior scheme, whether installed as a centerpiece or as a decorative divider between two rooms. Several patented technologies ensure user-friendly ignition that can effortlessly warm spaces of 2,000 square feet. As the only double-sided wood burning fireplace to meet the EPA’s most exacting emission standards, it confirms Supreme’s position as the industry leader of clean burn technology and embodies its long legacy of innovation.

TECHNICAL SPECIFICATIONS

Heat Capacity:	2,000 square feet
Max. Heat Output:	100,000 BTUs/hour (based on a 33 lb load of wood)
EPA Firebox Size:	3.1 cubic feet
Chimney:	6 inch listed to UL 103/ ULC S629 standards
Certifications:	EPA 28 & 5G option 3, CSA B-415.1.10, UL 127-2011 and ULC S610-M87
Emissions:	3.6 g/hr with EPA method 28 & 5G 2.2 g/hr with CSA method B-415.1.10
Glass Dimensions:	22¾"x 15"
Patent Numbers:	9/605,851, 7/325,547 & 9/476,593

PRODUCT CODE	DESCRIPTION	SUGGESTED RETAIL
--------------	-------------	------------------

DT-01	Duet, see-through fireplace in metallic black	\$ 3 100.00
DT-02	Duet, see-through fireplace in charcoal	\$ 4 095.00
UCAC8	Gravity duct: 8 inch insulated, 10 feet long (two are required for the installation of the Duet)	\$ 126.00

OPTIONS

DT2317	Block-off shield for 4 Seasons configuration (indoor/outdoor installation)	\$ 68.25
SU250	Hot air system 245 CFM	\$ 397.39
UCAC5	5 inch insulated duct, 25 feet long for hot air system	\$ 119.48
UPEA4	Fresh air kit	\$ 62.51
ADP4	Adaptor for fresh air kit	\$ 55.00
6CON	Connector from prefabricated chimney to liner	\$ 70.74



DUET



See-Through Fireplace


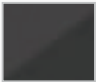



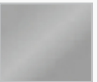
As the industry’s first and only see-through wood burning stove, the Vision is a masterpiece of engineering foresight. Thanks to its double-sided design and large glass doors that attractively display the beauty of the fire from both sides, the Vision acts as a compelling centrepiece in a room. Patented ignition and air control systems ensure optimum performance and unparalleled functionality. Available in a variety of different colors, the Vision comes fully equipped with two heat-activated blowers, a sealed ash pan and built-in barbecue grills.

TECHNICAL SPECIFICATIONS

Heat Capacity:	2,000 square feet
Max. Heat Output:	100,000 BTUs/hour (based on a 33 lb load of wood)
EPA Firebox Size:	3.1 cubic feet
Chimney:	6 inch listed to UL 103/ULC S629
Certifications:	EPA 28 & 5G option 3, CSA B-415.1.10, UL 127-2011 and ULC S610-M87
Emissions:	3.6 g/hr with EPA method 28 & 5G 2.2 g/hr with CSA method B-415.1.10
Glass Dimensions:	22¾"x 15"
Patent Numbers:	9/605,851, 7/325,547 & 9/476,593

PRODUCT CODE	DESCRIPTION	SUGGESTED RETAIL
VI-01	Vision, see-through stove in metallic black	\$ 3 780.00
VI-02	Vision, see-through stove in charcoal	\$ 3 780.00
VI-41	Vision, see-through stove in metallic black with mojave red	\$ 3 780.00
VI-51	Vision, see-through stove in metallic black with almond	\$ 3 780.00
VI-61	Vision, see-through stove in metallic black with honey glo brown	\$ 3 780.00
VI-SS1	Vision, see-through stove in metallic black with stainless steel	\$ 4 200.00

AVAILABLE COLORS:

					
Metallic Black	Charcoal	Mojave Red	Honey Glo Brown	Almond	Stainless Steel



VISION

FUSION 18

Wood Burning Fireplace Insert

Transform an old energy-draining fireplace into an eco-friendly, efficient heat source with the Fusion. Available in two firebox sizes, it can easily be installed into a variety of masonry openings. Several patented technologies underpin its peerless operation, providing instant ignition at the push of a button and long-lasting fires that exude fewer emissions. Its sleek design and innovative technologies introduce comfort, without forfeiting the beauty of the existing masonry.

TECHNICAL SPECIFICATIONS

Heat Capacity:	1,500 square feet
Max. Heat Output:	75,000 BTUs/hour (based on a 33 lb load of wood)
EPA Firebox Size:	1.8 cubic feet
Chimney:	5 inch liner
Certifications:	EPA 28R, ASTM E2780, ASTM E2515, CSA B415.1-10, UL 1482 and ULC S628
Emissions:	1.9 g/hr
Glass Dimensions:	19¼" x 11¼"
Patent Numbers:	7/325,547 & 9/476,593

PRODUCT CODE	DESCRIPTION	SUGGESTED RETAIL
18FN-01	Fusion 18, fireplace insert in metallic black	\$ 2 081.96
18FN-02	Fusion 18, fireplace insert in charcoal	\$ 2 081.96

OPTIONS *(select one of the following surrounds to complete order)*

18FNFA-01-34	Surround in metallic black (34" x 23")	\$ 185.00
18FNFA-01- 36	Surround in metallic black (36" x 24")	\$ 200.00
18FNFA-02-34	Surround in charcoal (34" x 23")	\$ 185.00
18FNFA-02-36	Surround in charcoal (36" x 24")	\$ 200.00
18FNFA-01SS- 34	Surround in metallic black and brushed stainless steel (34" x 23")	\$ 335.00
18FNFA-01SS- 36	Surround in metallic black and brushed stainless steel (36" x 24")	\$ 350.00
18FNFA-02SS- 34	Surround in charcoal and brushed stainless steel (34" x 23")	\$ 335.00
18FNFA-02SS-36	Surround in charcoal and brushed stainless steel (36" x 24")	\$ 350.00

FUSION 18



FUSION 24

Wood Burning Fireplace Insert

TECHNICAL SPECIFICATIONS

Heat Capacity:	2,000 square feet
Max. Heat Output:	90,000 BTUs/hour (based on a 33 lb load of wood)
EPA Firebox Size:	2.4 cubic feet
Chimney:	5 inch liner
Certifications:	EPA 28 & 5G option 3, CSA B-415.1.10, UL 1482 and ULC S628
Emissions:	4.4 g/hr
Glass Dimensions:	22¾" x 12¼"
Patent Numbers:	7/325,541, 9/476,593, 9/488,375

PRODUCT CODE	DESCRIPTION	SUGGESTED RETAIL
FN-01	Fusion 24, fireplace insert in metallic black	\$ 2 081.96
FN-02	Fusion 24, fireplace insert in charcoal	\$ 2 081.96

OPTIONS *(select one of the following surrounds to complete order)*

FNFA-01-38	Surround in metallic black (38" x 24")	\$ 194.25
FNFA-01-40	Surround in metallic black (40" x 26")	\$ 210.00
FNFA-02-42	Surround in metallic black (42" x 28")	\$ 225.75
FNFA-02-38	Surround in charcoal (38" x 24")	\$ 194.25
FNFA-02- 40	Surround in charcoal (40" x 26")	\$ 210.00
FNFA-02-42	Surround in charcoal (42" x 28")	\$ 225.75
FNFA-01SS-38	Surround in metallic black and brushed stainless steel (38" x 24")	\$ 351.75
FNFA-01SS-40	Surround in metallic black and brushed stainless steel (40" x 26")	\$ 367.50
FNFA-01SS-42	Surround in metallic black and brushed stainless steel (42" x 28")	\$ 383.25
FNFA-02SS-38	Surround in charcoal and brushed stainless steel (38" x 24")	\$ 351.75
FNFA-02SS-40	Surround in charcoal and brushed stainless steel (40" x 26")	\$ 367.50
FNFA-02SS-42	Surround in charcoal and brushed stainless steel (42" x 28")	\$ 383.25



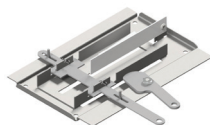
Exclusive Features & Technologies	GALAXY CLASSIC	GALAXY MODERN	GALAXY CONTEMPORARY	ASTRA 24CF	ASTRA 24TD	DUET/ 4 SEASONS	VISION	FUSION 18	FUSION 24
Stainless Steel Firebox	●	●	●	●	●	●	●	●	●
Premium Quality Blower	130 CFM	130 CFM	130 CFM	130 CFM	130 CFM	2 blowers, 155 CFM total	2 blowers, 155 CFM total	2 blowers, 110 CFM total	2 blowers, 110 CFM total
Built-In Barbecue Grill	●	●	●			●	●	●	●
Sealed Ash Pan	●	●	●			●	●		
Removable Ash Lip	●	●	●	●	●	●	●	●	●
Easy-Light Control*	●	●	●			●	●		
Chimney Sweeping Cap	●	●	●	●	●	●	●	●	●
Unique Door Operation	●	●	●	●	●	●	●	●	●
Hot Air System	●	●	●	●	●	●			
Innovative Baffle Design	●	●	●	●	●	●	●	●	●
Variable Secondary Air Control*	●	●	●	●	●	●	●	●	●
Automatic Air Control*	●	●	●	●	●	●	●	●	●
Cast-Iron Panels				●	●				

*Patented



STAINLESS STEEL FIREBOX

A result of more than 30 years of pioneering research and development, our combustion chamber provides superior heat transfer; within minutes of lighting, radiant warmth will be permeating your home.



PATENTED AUTOMATIC AIR CONTROL

This patented, user-friendly mechanism automatically reduces the amount of combustion air introduced during ignition to the desired burn rate setting. The result is a beautifully consistent fire burning to its full capacity.



CAST-IRON PANELS

An extra layer of durability and strength is provided with these cast-iron panels that line our heavy-duty stainless steel firebox. In addition to providing a quicker and more uniform heat transfer, the cast-iron prolongs the combustion by retaining warmth.



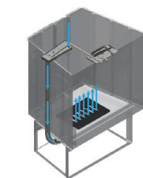
SEALED ASH PAN

Simple and mess-free: ashes fall through a perforated grate into the sealed ash pan that is effortlessly removed and emptied.



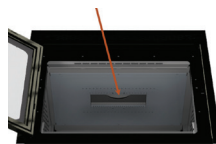
REMOVABLE ASH LIP

Offering another layer of protection against ashes, this removable accessory can be attached below the door to prevent spills when the fireplace is opened.



EASY-LIGHT CONTROL

There is no need to bother with kindling wood or newspaper when lighting our products. The patented easy-light mechanism releases a quick boost of air to aid ignition, ensuring warming your home is as simple as pushing a button.



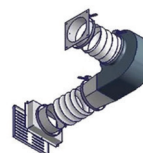
CHIMNEY SWEEPING CAP

Located on the baffle, this convenient feature allows the chimney to be easily accessed for cleaning, without requiring the removal of any components.



UNIQUE DOOR OPERATION

Our finely crafted door handle has an ergonomic design and keeps the door shut by means of a latch for a secure operation.



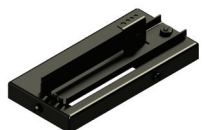
HOT AIR SYSTEM

This option helps distribute warm air to different floors or areas as far as 25 feet away.



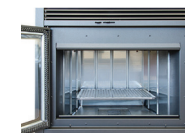
INNOVATIVE BAFFLE DESIGN

Most EPA units have secondary air tubes that reduce the firebox height and require maintenance. Our unique design allows secondary air to enter through a perforated baffle offering an unimpeded view of the fire all while increasing the efficiency and combustion.



PATENTED VARIABLE AIR CONTROL

A variable amount of secondary air is introduced into the firebox that mixes with the rising gases of the wood. The result is an appealing and unique arrangement of flames that prolongs combustion, increases efficiency and minimizes emissions.



BUILT-IN BARBECUE GRILL

Avid barbecue fans will love this built-in accessory! Simply drop down the grill over embers to cook memorable meals imbued with flavorful smokiness all year-round.

FREIGHT PROGRAM

Dealers can take advantage of our freight program to secure the best rates for shipping and handling.

CANADA

rates charged per unit

REGIONS	1 UNIT	2 UNITS	3 UNITS	4 UNITS	5 UNITS	6 UNITS
British-Columbia	180	150	130	100	80	Prepaid
Alberta, Saskatchewan and Manitoba	150	120	100	70	50	Prepaid
Ontario	110	80	70	40	30	Prepaid
Quebec	90	70	50	30	20	Prepaid
Maritimes	120	90	80	50	40	Prepaid
Newfoundland	140	120	110	90	70	Prepaid

UNITED STATES

rates charged per unit

REGIONS	1 UNIT	2 UNITS	3 UNITS	4 UNITS	5 UNITS	6 UNITS
New England and New York	100	70	60	30	20	Prepaid
Mid-Atlantic: Delaware, Maryland, New Jersey and Pennsylvania	130	100	90	60	50	Prepaid
Mid-States: Kentucky, Michigan, Ohio and West Virginia	110	80	70	40	30	Prepaid
Midwest: Illinois, Indiana, Kansas and Missouri	120	90	80	50	40	Prepaid
North Central: Iowa, Nebraska, North & South Dakota, Minnesota and Wisconsin	110	80	70	40	30	Prepaid
Pacific: Washington, Oregon and California and Nevada	180	150	130	100	80	Prepaid
South Central: Texas, Oklahoma, Arkansas, Louisiana, Mississippi, Tennessee and Alabama	160	130	120	80	60	Prepaid
South East: Virginia, North & South Carolina, Georgia and Florida	150	120	100	70	50	Prepaid
Montana, Idaho, Wyoming, Utah, Colorado, Arizona and New Mexico	140	110	90	60	40	Prepaid
Alaska	280	250	240	200	180	Prepaid





SUPREME

3594 Jarry East,
Montreal, Quebec H1Z 2G4

Telephone: 514 593.4722

Toll-free: 1 877 593.4722

Facsimile: 514 593.4424

www.supremem.com

info@supremem.com

